

POC2LRHK NTC INSTALLATION



Items Needed

- Magnetic Tip Phillips Screwdriver
- Cold NTC Part# 036101-101

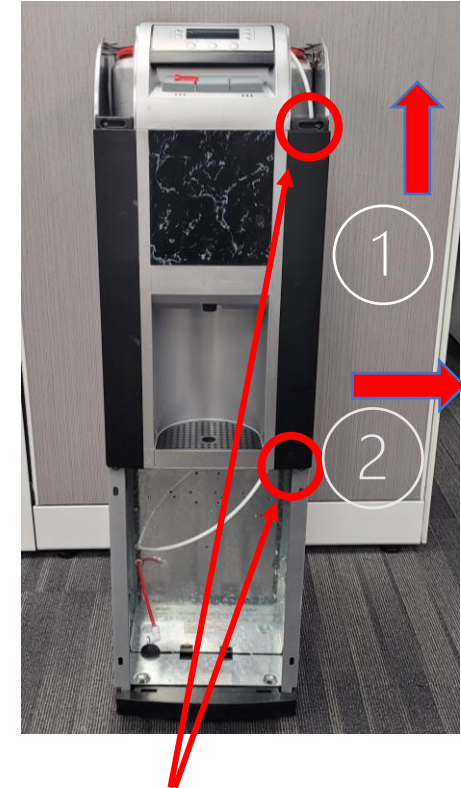
Opening the Cabinet



Remove the 2 screws from the top and lift upward.

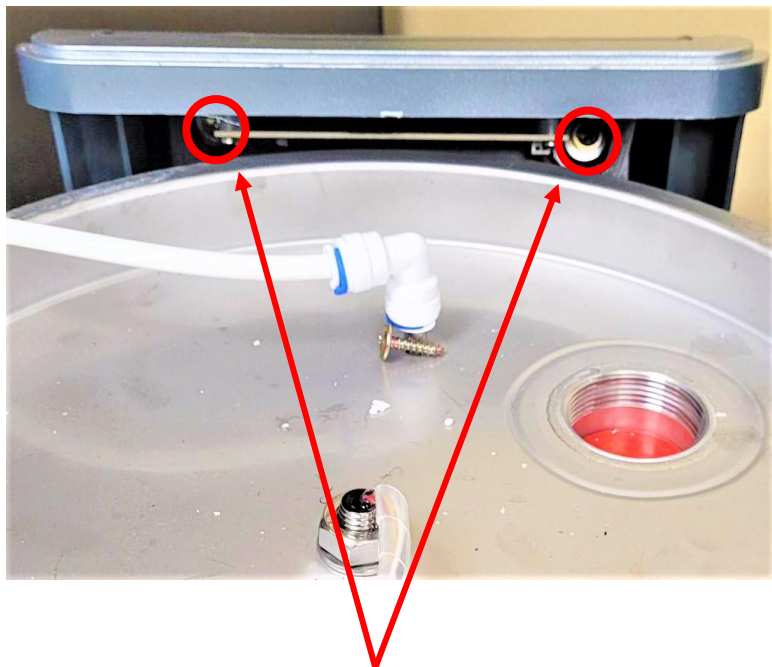


Remove the 2 screws from the side panel at the shelf and the base



Remove the 2 screws at the top and bottom of the front panel.
Then lift the side panel up (1) and then out (2) to open the cabinet

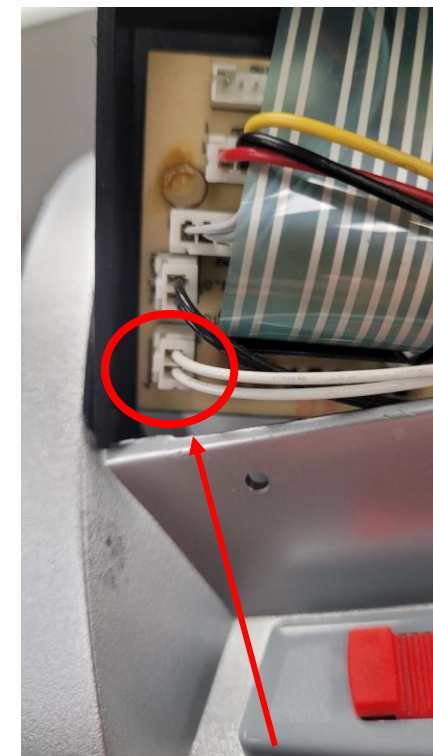
Accessing the PCB



Remove the 2 screws that secure the PCB assembly to the front panel using a magnetic tip Phillips screwdriver

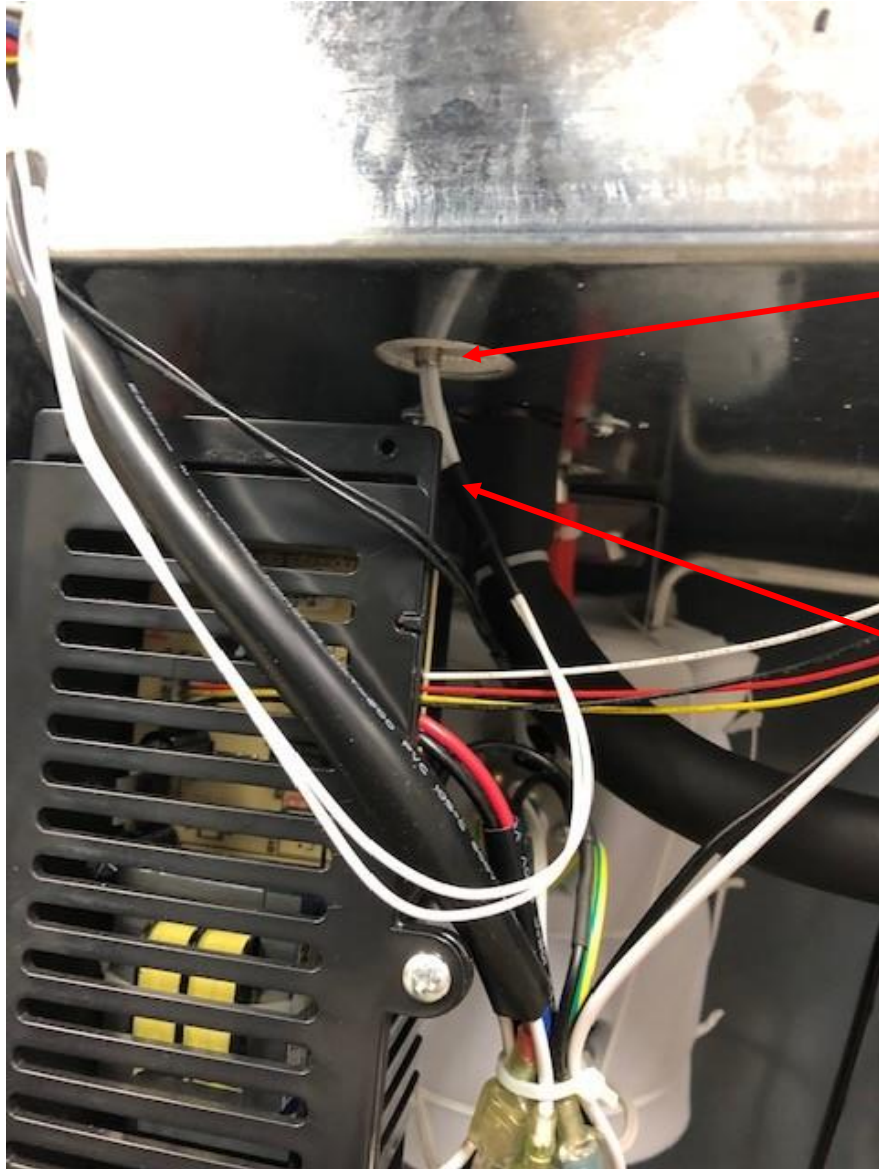


Lift the PCB assembly upward to remove



The cold NTC will be the white wire connected to the PCB. Unplug this wire and attach the new NTC. Plug the unit into an outlet, if the NTC was the issue the compressor should start running.

Replacing the NTC



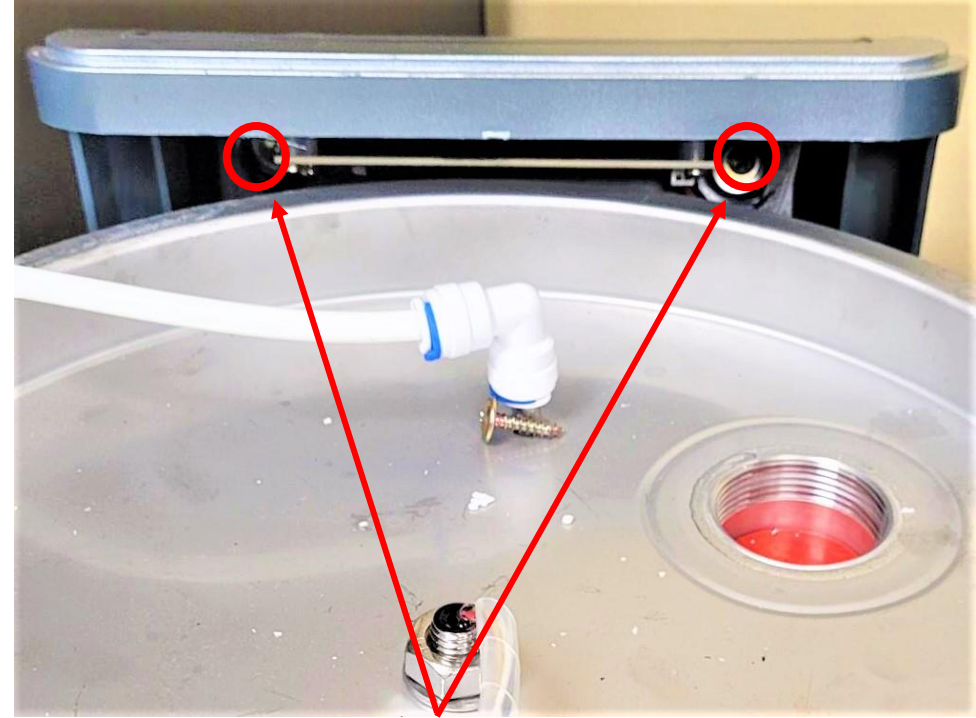
Pull the old NTC wire from the thermowell and discard

When inserting the new NTC into the thermowell, make sure there is only about an inch exposed before the black wire insulation.

Installing the PCB Assembly

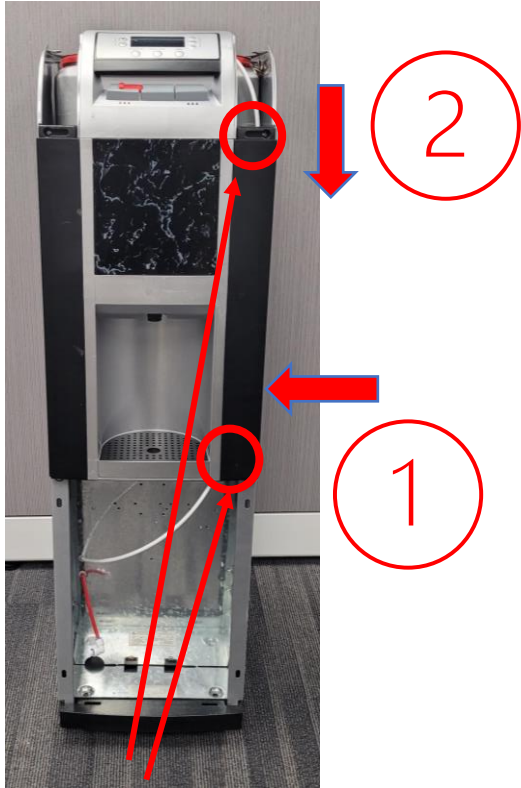


Re-insert the PCB
assembly into the front
panel

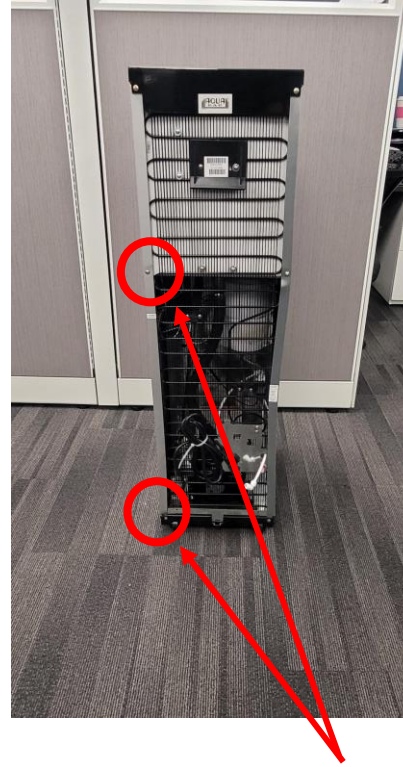


Use your magnetic tip Phillips
screwdriver to replace the PCB
assembly screws

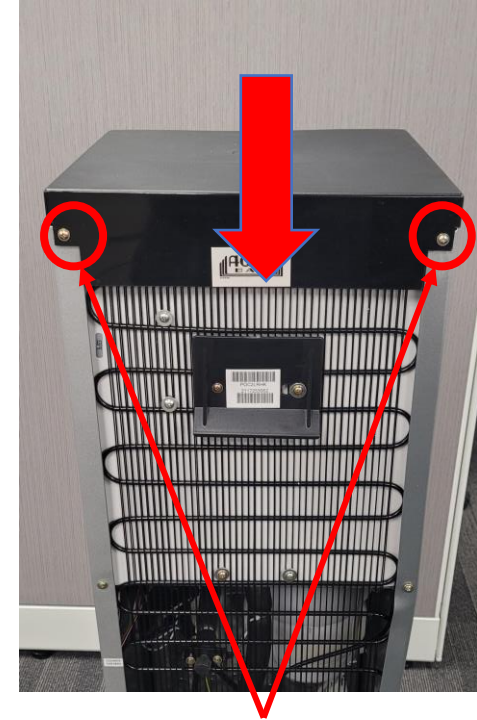
Replacing the Panels



Replace the side panel by
sliding in from the side
(1) and dropping the
panel down into place (2)
Then replace the 2
screws



Replace the 2 screws on
the back of the side panel



Add the top and secure the 2
screws

Technical Support

Phone: 800.646.2747

Email: techserv@oasiscoolers.com

Web: www.oasiscoolers.com